

Synthesizer Software and Documentation download

Go to the **Support** page on the Isomet Web Site

Select **Synthesizers**

https://isomet.com/synth_home.html

Select synthesizer model



1. Software

Select Software Installation

To install the SDK and Isomet Studio GUI for MS Windows, click on-

Isomet iMS SDK 2.x.x Windows Setup (.exe)



For earlier SDK releases with Window 7 support:

Depending on your computer, select and run one of the following:

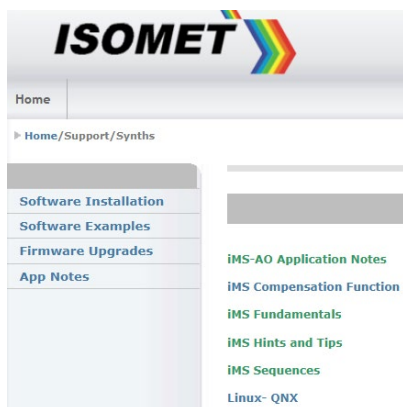
Isomet iMS SDK v 1.xx Win7 Setup.exe

Isomet iMS SDK v 1.xx Win10 Setup.exe

2. Manuals and App notes

Supporting documentation can be found by following the remaining links

e.g. **App Notes** and **Software Examples**



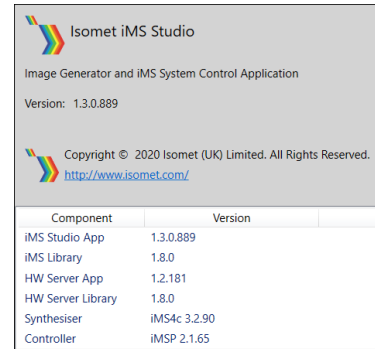
Please begin by referring to your iMS model under **App Notes > iMS Fundamentals**

3. Tools: Firmware Revision and Upgrade

3.1: Firmware Revision

To check SDK and build revision.

Using the Isomet Studio GUI, go to **Tool bar > Help > About**



3.2: Firmware Upgrade

Firmware upgrade options:

| Model | Build Revision | Controller (c) | Synth (s) |
|------------|----------------|----------------|-----------|
| iCSL, iCSA | All | Yes | |
| iMS4-L | rev A,B,C | No | No |
| iMS4-P | rev B, C | Yes | No |
| iMS4-P | Rev D, E | Yes | Yes |
| iMS2-HF | rev A | Yes | No |

Procedure for updating the Firmware:

Step1: Ensure SDK version v1.8.0 (or later) is installed.

Step2: Download and Unzip the firmware update file into a known location. Navigate to this folder with Windows Explorer.

Find the **update_me.bat**

Find the new firmware: ***.mcs file.** (see 3.3)

- 'Drag and drop' the ***.mcs** file and place on top of the '**upgrade_me.bat**' script. Follow the instructions.

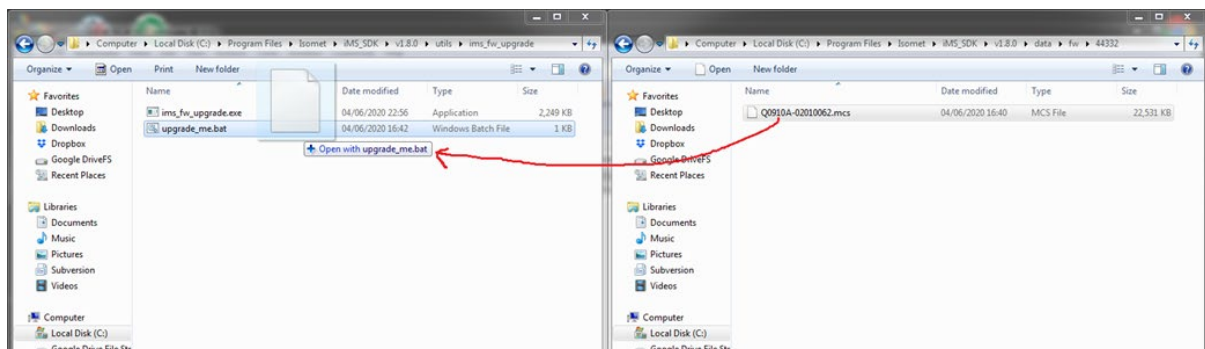


Step3: For iMS models, depending on the firmware upgrade required:

Select (c) for controller

Select (s) for synthesizer

Step4: When complete, turn off, pause and then turn on the DC power to the iMS.



3.3: Firmware Location

The controller firmware version current at the release date of the SDK is included as part of the SDK installation. Example: SDK v1.8.9

Find the controller firmware image at:

C:\Program Files\Isomet\iMS_SDK\v1.8.9\data\fw\44332\Q0910A-02010085.mcs

and as described above, drag / drop it onto the upgrade script at:

C:\Program Files\Isomet\iMS_SDK\v1.8.9\utils\ims_fw_upgrade\upgrade_me.bat

Notes:

- The firmware update procedure can take 5 minutes or more to download and update.
- Should the procedure time-out it will be necessary to re-try.
- Cycle the DC power to the between update attempts.
- Update can be made through either a USB or GbE connection.
- If the update fails, the firmware will default to the original factory installed revision.